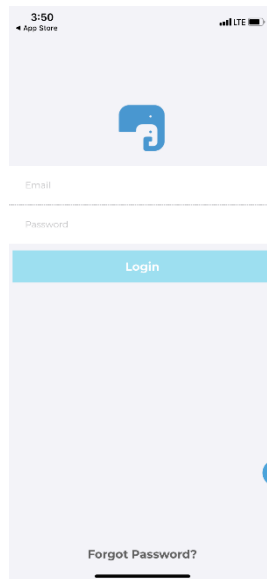


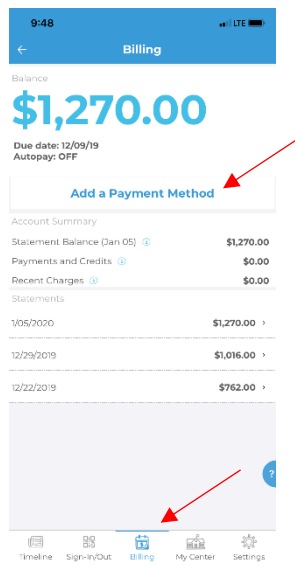
Follow the steps below to set up an ACH bank account on SmartCare to avoid Credit Card fees when making payments.

Step 1: Download SmartCare Parent app from Apple Store or Google Play

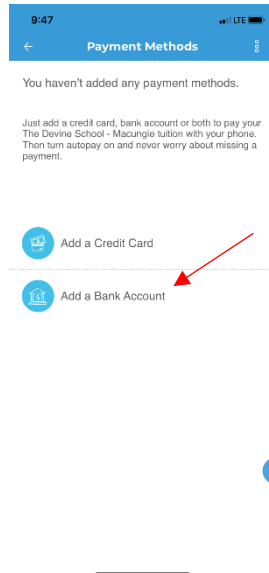
Step 2: Log onto SmartCare app with email and password that you set up in the initial set-up email that you received upon enrolling



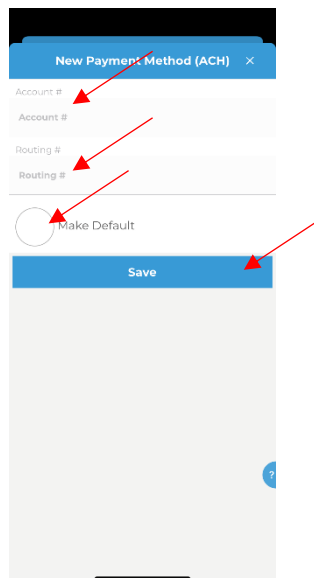
Step 3: On the bottom of the screen, click on the billing tab and then click "Add a Payment Method."



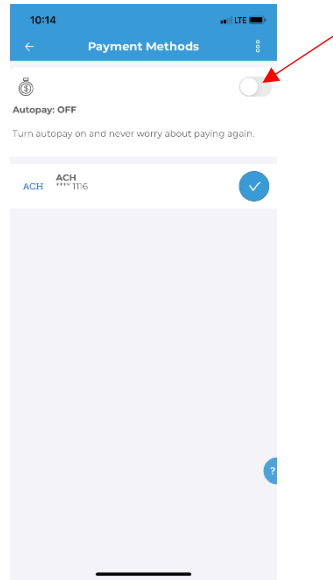
Step 3: Select the type of payment you would like to add. In this case, you would select “Add a Bank Account.”



Step 4: Fill in Account # and Routing #. Check off “Make Default” and click “Save.”



Optional Step: If you would like to set up Autopay (**highly recommended** to avoid any late fees), simply toggle over the autopay switch after setting up account.



If you already have your account set up without Autopay and would like to turn it on, go to the billing tab within your app and click on “Settings.” It will then bring you to the screen above.

